


ORDER

WHEREAS, The Commissioners Court of Hopkins County authorizes the taking in of Private Drive in Precinct 3 which extends from the beginning of CR 3502 in a westerly direction for approximately 1018 feet and being approximately 28 feet wide; and

WHEREAS, The westerly point becomes the new point of beginning for CR 3502; and

WHEREAS, The extension will become a part of CR 3502 in Hopkins County; and


APPROVED by the Hopkins County Commissioners Court at the regularly scheduled meeting on the 28th day of November, 2022.


Robert Newsom, Hopkins County Judge

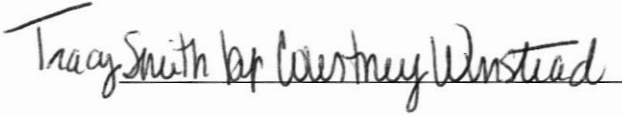

Mickey Barker, Commissioner, Pct. 1


Greg Anglin, Commissioner, Pct. 2


Wade Bartley, Commissioner, Pct. 3

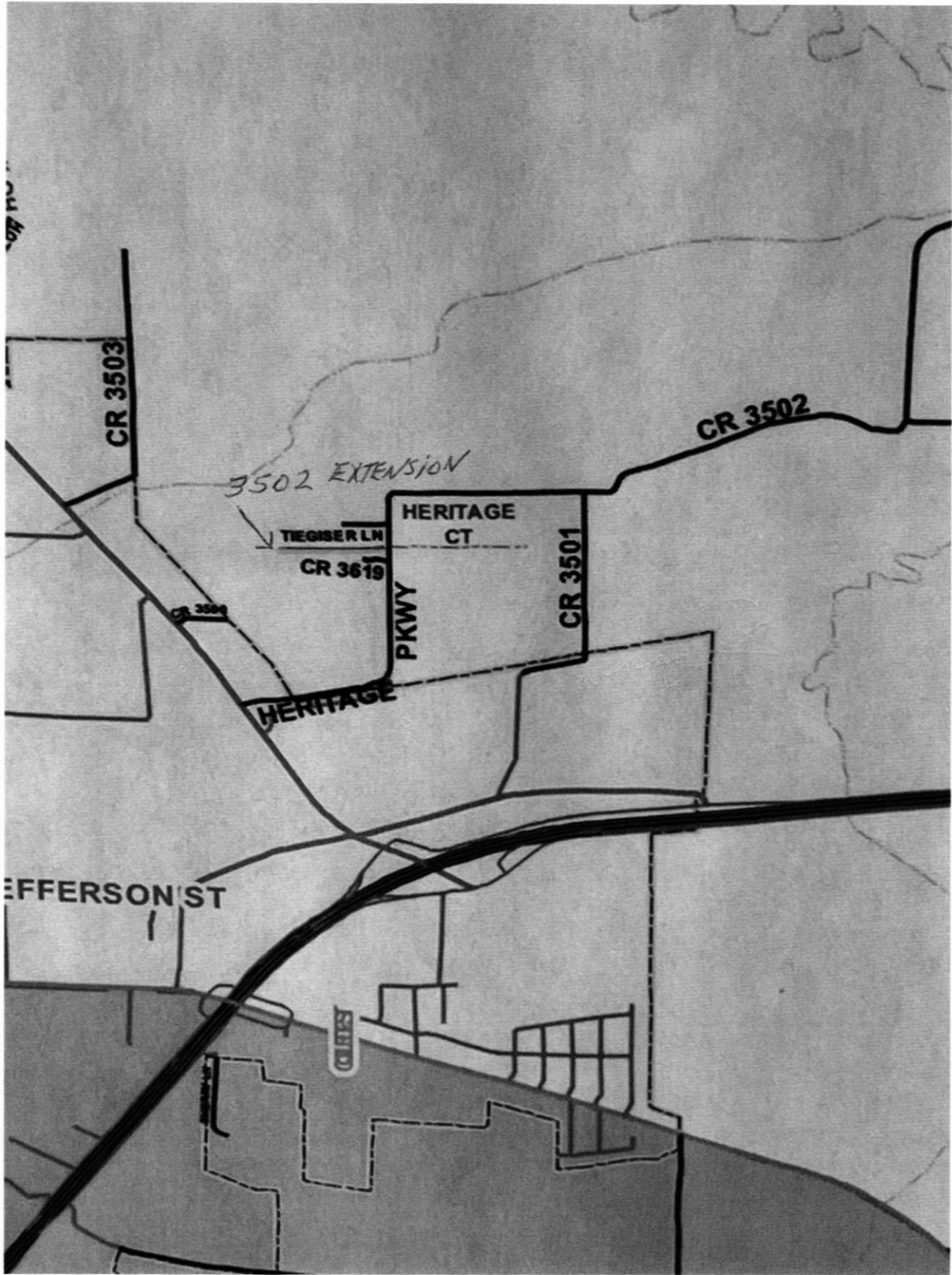

Joe Price, Commissioner, Pct. 4

ATTEST:

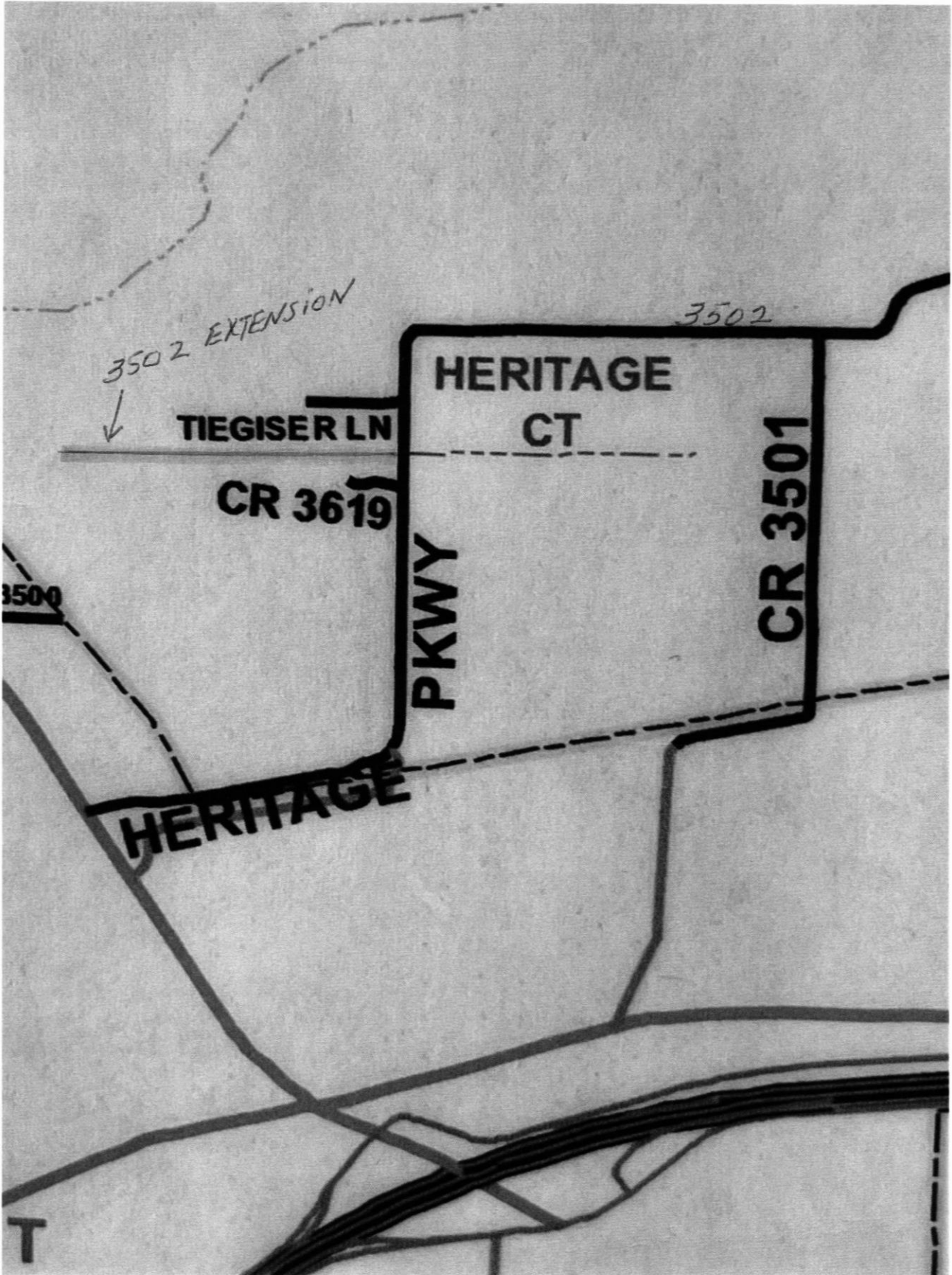


COUNTY CLERK





11-28-22 Wade Bentley



11-28-22 Wade Bentley